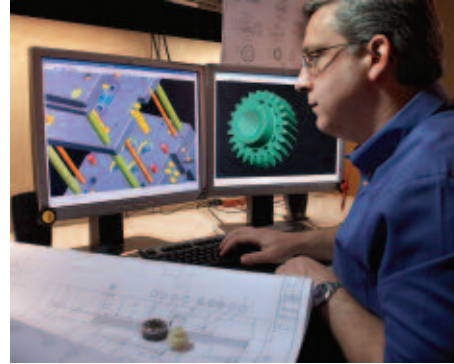


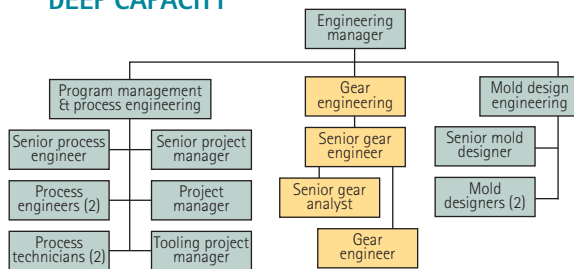
# ABA-PGT. It spells complete gear engineering.



## EXTENSIVE KNOWLEDGE BASE

Over 200 years combined experience

## DEEP CAPACITY



## COMPLETE PLASTIC GEAR TRANSMISSION DESIGN

### Comprehensive review of customer specifications including:

Gear mesh analysis  
Material recommendations  
Environmental effects  
Tolerance review

### Manufacturing gear data

### 2D drawings

### Solid models

### Gear Train Efficiency Analysis

### All types of gearing

External & internal spur and helical  
Planetary gears      Crown gears  
Face gears              Pump gears  
Racks                      Sprockets  
Straight and spiral bevel  
Worms & Worm Gears (Cross-axis)  
Pulleys with 1 or 2 flanges  
Cycloidal gears

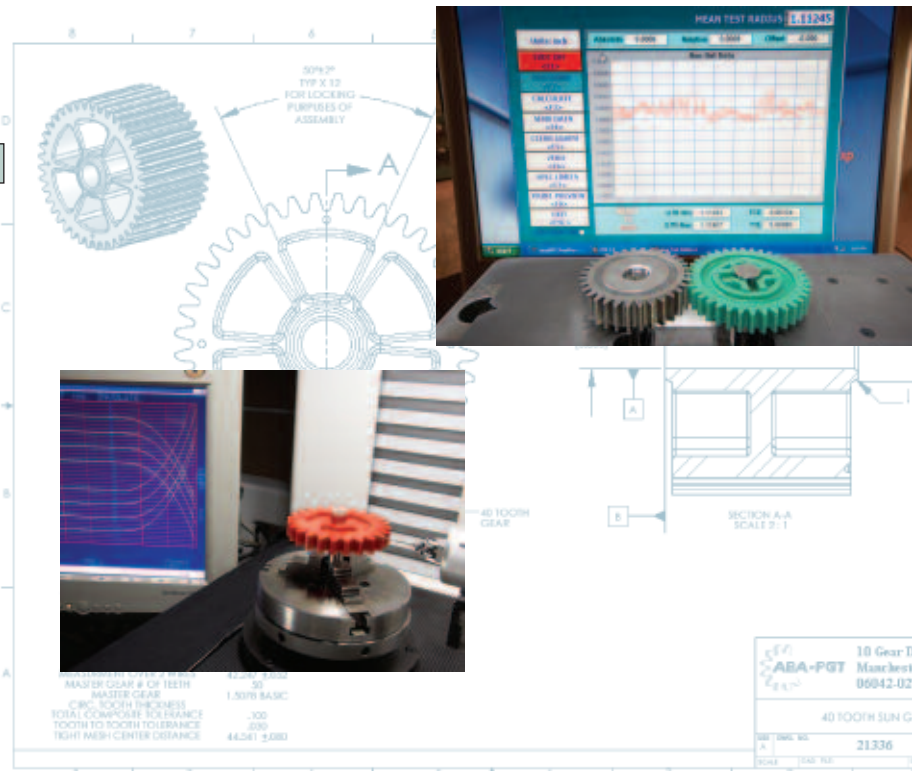
### Reverse engineering

Development of complete gear data  
from existing samples

### Noise analysis

### Wear, fracture, or bending fatigue analysis

### Design for Manufacturability (DFM)



**The High Visibility Developer  
The Invisible Supplier**



*Our gears are always turning.*



10 Gear Drive P.O. Box 8270 Manchester, CT 06042-0270  
860.649.4591 Toll-free 1.877.840.2172 FAX 860.643.7619  
info@abapgt.com www.abapgt.com